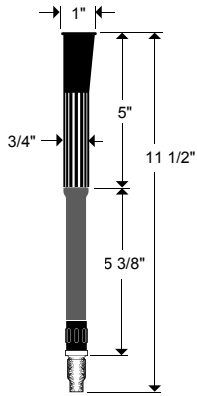
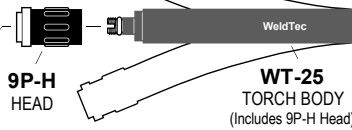


REPLACEMENT PARTS

WT-25
PENCIL, FLEX
225 AMPS • WATER COOLED



MAXIMUM ELECTRODE LENGTH
2 3/8" (60 mm)



OPTIONAL HANDLE

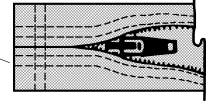


H-100 HANDLE



H-100B HANDLE - STANDARD

TC-3-10Z 11 FT.
TC-3-22Z 24 FT.
3" NYLON CABLE COVER WITH ZIPPER CLOSURE
(See Cable Covers For Options)



45V07R 12.5 FT.
45V08R 25 FT.
WATER HOSE - RUBBER

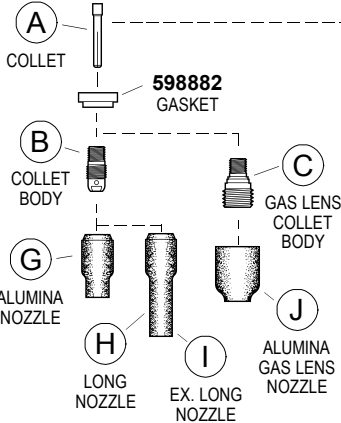
45V09R 12.5 FT.
45V10R 25 FT.
GAS HOSE - RUBBER

45V03R 12.5 FT.
45V04R 25 FT.
POWER CABLE - RUBBER

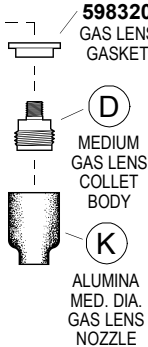
45V09 12.5 FT.
45V10 25 FT.
GAS HOSE - VINYL

45V07 12.5 FT.
45V08 25 FT.
WATER HOSE - VINYL

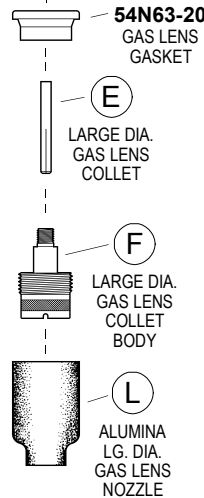
45V03 12.5 FT.
45V04 25 FT.
POWER CABLE - VINYL



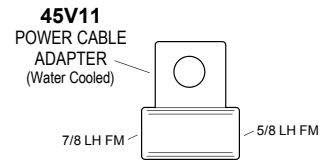
A COLLET
B COLLET BODY
C GAS LENS COLLET BODY
D MEDIUM GAS LENS COLLET BODY
E LARGE DIA. GAS LENS COLLET
F LARGE DIA. GAS LENS COLLET BODY
G ALUMINA NOZZLE
H LONG NOZZLE
I EX. LONG NOZZLE
J ALUMINA GAS LENS NOZZLE
K ALUMINA MED. DIA. GAS LENS NOZZLE
L ALUMINA LG. DIA. GAS LENS NOZZLE



A 598882 GASKET
B 598320 GAS LENS GASKET
C 54N63-20 GAS LENS GASKET

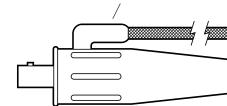


A 598882 GASKET
B 598320 GAS LENS GASKET
C 54N63-20 GAS LENS GASKET



45V11 POWER CABLE ADAPTER (Water Cooled)

7/8 LH FM 5/8 LH FM



QUICK CONNECTOR (See Quick Connector Guide)

COLLETS • COLLET BODIES • GAS LENS

ITEM	ELECTRODE DIAMETER	.020 0,5	.040 1,0	1/16 1,6	3/32 2,4	1/8 3,2
A	COLLET	13N20	13N21	13N22	13N23	13N24
B	COLLET BODY	13N25	13N26	13N27	13N28	13N29
C	GAS LENS	45V41	45V42	45V43	45V44	45V45
D	MED. DIA. GAS LENS	—	—	45V35SW	45V36SW	45V37SW
E	LG. DIA. GAS LENS COLLET	13N20L	13N21L	13N22L	13N23L	13N24L
F	LG. DIA. GAS LENS	45V0204S		45V116S	45V64S	995795S

GAS NOZZLES

ITEM	NO. SIZE	3 3/16"	4 1/4"	5 5/16"	6 3/8"	7 7/16"	8 1/2"	10 5/8"	11 11/16"	12 3/4"
G	ALUMINA	—	13N08	13N09	13N10	13N11	13N12	13N13	—	—
H	LONG 17/8"	796F70A	796F71A	796F72A	796F73A	—	—	—	—	—
I	EX. LONG 2 1/2"	796F74A	796F75A	796F76A	796F77A	—	—	—	—	—
J	ALUMINA GAS LENS	—	53N58	53N59	53N60	53N61	53N61S	—	—	—
K	ALUMINA MED. DIA. GAS LENS	—	—	—	54N16SW	54N15SW	54N14SW	54N12SW	54N19	—
L	ALUMINA LG. DIA. GAS LENS	—	—	—	57N75	—	57N74	53N88	—	53N87*

Specifications and descriptions subject to change without notice.

* #15 53N89 15/16" ID X 1 7/8" Long